



CROWNE PLAZA®

AN IHG® HOTEL

AUCKLAND

From the
boardroom to
the not-so-bored
room.





WE'RE ALL BUSINESS, MOSTLY.

Our Hotel

Crowne Plaza Auckland is an award-winning hotel in one of the city's finest locations – minutes' walk from the Sky Tower and Auckland's best restaurants, bars, shops and theatres.

Whether you're in the city for business, pleasure, or a little bit of both, we offer the perfect mix of comfort, service and convenience. Enjoy a new way to travel, where you feel fully connected with free Wi-Fi in all hotel areas.

With 352 rooms ranging from Superior to Deluxe Club, and luxury Suites, we offer a range of options to make sure you get that well-earned beauty sleep. Our hotel facilities include versatile meeting and conference spaces, an exclusive Club Lounge on level 28, a well-equipped gym and a 24-hour business centre. What more could you want?

Our meeting facilities include 10 flexible function rooms and space for up to 500 guests. We'll provide you with the latest technology for your meeting, plus there are 700 car parks available making it easy for your guests. If you are holding a larger event, book at Auckland's largest convention centre just next door and we can offer preferential room rates for your attendees.

Service

We know your time is valuable, so we'll get back to you within two hours. We'll send you dates, rates and space availability, followed by a complete proposal within 24 hours or at latest the next working day.

For a great meeting of minds, our experienced Crowne Meetings Director is your single point of contact for the duration of your event and will make sure that no preferences will be lost. Let us take the stress out of organising and make sure that your off site, is off the charts. Concentrate on the important stuff while we take care of the behind the scenes.



Food

We have many catering options available to fit your event. Whether it's a full hot buffet breakfast, a snack in between or plated lunch, our talented kitchen team will accommodate your wishes and take all dietary requirements into account.

Take your brainstorm to Aria Bar and enjoy the relaxed atmosphere with an extensive bar menu, or come in for an after work drink and try one of our delicious signature cocktails. Tummy rumbling? Check out Aria Restaurant next to our lobby, serving New Zealand cuisine prepared with the best local and fresh produce and an extensive breakfast buffet seven days a week. If you feel more like staying in, check out our healthy in-room dining menu.

Rewards

Join IHG® Business Rewards for exclusive offers and to collect valuable points that can be redeemed for air miles, gifts or free nights. With every event you hold at Crowne Plaza Auckland or one of our 5000+ locations in the world, you can collect your points for something special.

Rooms

Our spacious Superior Rooms are the perfect place to relax after a busy day, plus offer enough space to prepare for tomorrow's meeting. Upgrade to a Deluxe Room and enjoy extra amenities including a capsule coffee machine. Both room types are available on our designated quiet floor, where our Sleep Advantage™ program guarantees an undisturbed night's sleep, with premium bedding, the Elemis aromatherapy sleep spray, plus a guaranteed wake-up call (if you want...).

Treat your attendees with a Club Room or Suite on the hotels top floors for extra amenities and access to our exclusive Club Lounge. The lounge features an incredible view over Auckland's harbour and offers complimentary continental breakfast, evening drinks and canapés, computers and printers, plus many more benefits.



Check us out and Check in

If you are searching for an amazing location and great facilities for your next meeting, look no further than Crowne Plaza Auckland. Our dedicated team will ensure your event is a great success.

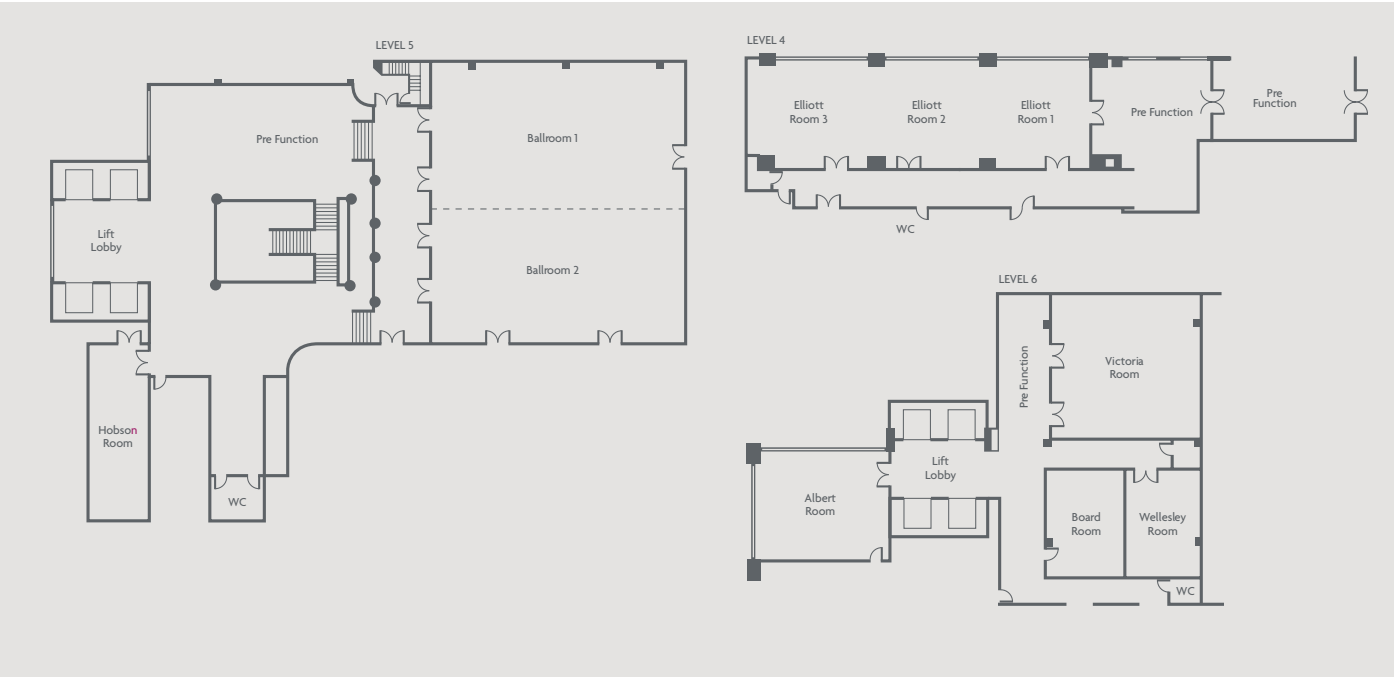
If you have any queries while in house, our amazing concierge team and the experienced meetings team are available 24/7 to provide whatever you need, whenever you need it.

Spaces

Meeting Room Configuration

	Dimension (M)	Floor Area (M²)	Ceiling Height (M)	Theatre	Classroom	Banquet	Cocktail	Boardroom	U-Shape	Cabaret
Elliot Room One	9 x 8	72	3.1	50	25	40	50	18	18	32
Elliot room Two	8 x 8	64	3.1	49	25	40	49	18	18	32
Elliot Room Three	9 x 8	72	3.1	49	25	40	49	18	18	32
Elliot Room One and Two	17 x 8	136	3.1	100	60	80	100	30	40	64
Elliot Room Two and Three	17 x 8	136	3.1	100	60	80	100	30	40	64
Elliot Room One, Two and Three	26 x 8	208	3.1	180	100	150	150	44	55	96
Elliot Rooms Pre Function Area	-	218	3.1	-	-	-	100	-	-	-
Ballroom One	20 x 10.5	210	5	220	120	120	175	70	60	112
Ballroom Two	20 x 10.5	210	5	220	120	120	175	70	60	112
Ballroom One and Two	21 x 20	420	5	460	240	340	400	110	90	272
Hobson Room	14 x 4.5	63	2.5	40	20	30	40	18	20	24
Ballroom Pre Function Area	-	317	2.8	-	-	-	240	-	-	-
Wellesley Room	7.5 x 5	37.5	2.5	20	10	20	20	14	14	16
Albert Room	9 x 8	72	2.5	49	32	49	49	20	24	32
Victoria Room	10 x 10	100	2.5	70	50	70	80	20	27	48
Boardroom	7 x 5.5	38.5	2.5	-	-	-	-	12	-	-
Meeting Centre 6th Floor Pre Function Area	-	108	2.5	-	-	-	20	-	-	-

Meeting Room Floor Plans





CROWNE PLAZA®

AN **IHG®** HOTEL

AUCKLAND

Crowne Plaza Auckland

T +64 9 375 4902 or 0800 154 181

meetings.auckland@ihg.com auckland.crowneplaza.com

128 Albert Street, Auckland, 1010, New Zealand