

We should meet
like this more
often





OUR HOTEL

Crowne Plaza Auckland is an award-winning hotel in one of the city's most convenient locations – minutes' walk from the Sky Tower and Auckland's best restaurants, bars, shops and theatres.

Whether you're in the city for business, pleasure, or a little bit of both, we offer the perfect mix of comfort, service and convenience. Travel has never looked more inviting, as you step into a space where you can be productive, connected, rested and restored.

With 352 rooms ranging from Standard to Luxury Suites, we offer a range of options to make sure you get that well-earned beauty sleep. Our hotel facilities include versatile meeting and conference spaces, a well-equipped gym, free Wi-Fi in all hotel areas and a 24-hour business centre.

Our meeting facilities include 10 flexible function rooms and space for up to 500 guests. We'll provide you with the latest technology for your meeting, plus there are 700 car parks available making it easy for your guests. If you are holding a larger event, book at one of the Auckland's largest convention centre, Aotea Centre just next door and we can offer preferential room rates for your attendees.

FIRST IMPRESSIONS COUNT

Our location in the heart of Auckland makes us the perfect base for your event and allows you to connect business and leisure seamlessly.

Our Clefs d'Or Concierge can help you with virtually anything from planning a trip, to booking the best restaurants. So what are you waiting for? Plan your next meeting, conference or vacation at Crowne Plaza Auckland.

SERVICE THAT DOESN'T JUST SUFFICE

We know your time is valuable, so we'll get back to you within two hours. We'll send you dates, rates and space availability, followed by a complete proposal within 24 hours or at latest the next working day.

For a great meeting of minds, our experienced Crowne Meetings team are your single point of contact for the duration of your event and will make sure that no preferences will be lost.

Let us take the stress out of organising, so you can concentrate on your productivity while we take care of the behind the scenes.

GET THE REWARDS

When you make bookings on behalf of others, for business or for pleasure, we're here to reward you. With our global loyalty programme IHG® One Rewards, you can earn points every time you book accommodation, meetings, or events at nearly 6,000 participating [IHG® Hotels & Resorts worldwide](#).

SPACE TO RELAX

Our spacious Standard Rooms are the perfect place to relax after a busy day, plus offer enough space to prepare for tomorrow's meeting.

Upgrade your stay with an elevated room on a higher floor or reserve a specific view. Both room types are available on our designated quiet floor, where our Sleep Advantage™ programme guarantees an undisturbed night's sleep, with premium bedding, aromatherapy sleep spray, plus a guaranteed wake-up call (if you want...).





FOOD, GLORIOUS FOOD

We have many catering options available to fit your event. Whether it's a full hot buffet breakfast, a snack in between or plated lunch, our talented kitchen team will accommodate your wishes and take all dietary requirements into account.

Take your brainstorm to Aria Bar and enjoy the relaxed atmosphere with an extensive bar menu, or come in for an after work drink and try one of our delicious signature cocktails.

Try Aria Restaurant next to our lobby, serving New Zealand cuisine prepared with the best local and fresh produce and an extensive breakfast buffet seven days a week. If you feel more like staying in, check out our healthy in-room dining menu.



CHECK IN

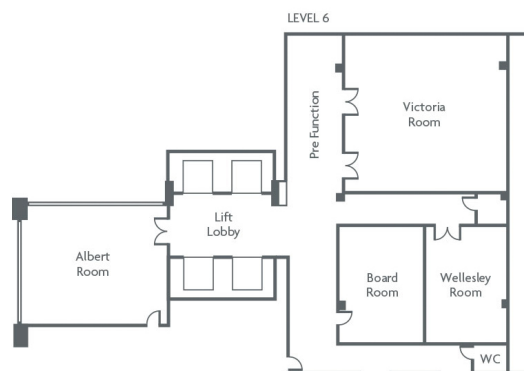
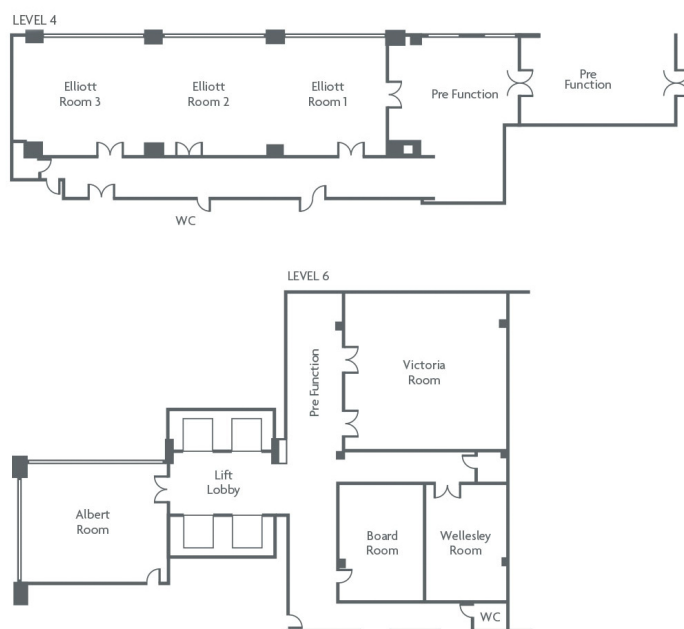
If you are searching for an amazing location and great facilities for your next meeting, look no further than Crowne Plaza Auckland. Our dedicated team will ensure your event is a great success.



If you have any queries while in house, our amazing concierge team and the experienced meetings team are available to provide whatever you need, whenever you need it.



Meeting Room Floor Plans



Meeting & Event Room Capacities

Meeting Rooms	Size	Length x Width	Height	Boardroom	Theatre	Cabaret	Banquet	Classroom	Cocktail	U -Shape
Ballroom 1	210	20 x 10.5	5	70	220	88	120	120	220	50
Ballroom 2	210	20 x 10.5	5	70	220	88	120	120	220	50
Ballroom 1 & 2	420	20 x 21	5	110	500	232	300	240	500	90
Ballroom PFA	317		2.8						240	
Elliott 1	74	9 x 8	3.1	18	50	32	40	25	50	18
Elliott 2	62	8 x 8	3.1	18	49	32	40	25	49	18
Elliott 3	74	9 x 8	3.1	18	49	32	40	25	49	18
Elliott 1 & 2	134	17 x 8	3.1	30	100	64	80	60	100	40
Elliott 2 & 3	134	17 x 8	3.1	30	100	64	80	60	100	40
Elliott 1, 2 & 3	205	26 x 8	3.1	44	180	96	150	100	180	55
Elliott PFA	192		3.1						100	
Victoria	94	9.8 x 9.6	2.5	20	80	48	70	50	80	27
Albert	76	9.8 x 7.8	2.5	20	49	32	40	32	49	24
Wellesley	34	7.8 x 4.4	2.5	14	20	16	20	10	20	14
Hobson	58	12 x 4.8	2.5	18	40	24	30	20	40	20
Boardroom	39	7 x 5.5	2.5	12						
Level 6 PFA	89		2.5						20	